

E1 - Manticore™ ARFF

Summary

- 6x6 drive train.
- 12,500 litre water tank.
- 1,500 litre foam tank.
- Titan Chassis with Kessler axles.
- GVW up to 39 tons.
- 2 + 4 crew cabin – Fully certified to ECE R29 Regulations.

Chassis Specification

- Scania DC16, V8 diesel engine.
- Euro 6 emissions compliant.
- Max Torque 3,183Nm at 1,500 rpm.
- Top speed of 160 km / h.
- 0 – 80 km / h in 26.4 secs.
- Panoramic roof.
- Largest crew cab in its class.

Body Specification

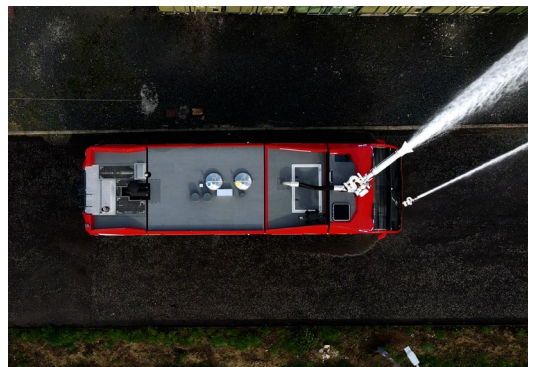
- 250 KG Dry chemical powder extinguishing system.
- 12,500 litre water tank.
- 1,500 litre foam tank.
- Water pump with 8,000 litres per minute at 10 bar output.
- Side lockers with customer specific stowage arrangement.
- Side pump bay locker.
- Water and dust resistant roller shutter doors.
- FireDos Roof Monitor: 6,000 litres per minute at 10 bar.
- FireDos Front monitor: 2,000 litres per minute at 10 bar.
- Quick attack rotating hose reel within locker.
- Tyre and ground suppression system.

Accessories

- Vision 4,0 system camera mirrors on 15 inch screens.
- Centre console for control of roof and front turret controls.
- Optional 20m HRET.
- 6 x BA seating within cabin.
- Pneumatic BUS style doors.
- eCabControl screen.
- In cab custom interior lighting.
- LED step lighting.
- Folding ladder at rear & roof hatch in cab.
- Roof surface walkway illuminated by LED lights.
- Crew welfare/Hygiene board.

Optional

- 4x4 drive configuration.
- 8x8 drive configuration.
- **Hybrid technology** available to meet growing demand for Carbon Neutral airfield requirements!



DATA- 126/A

Further Options available.
To discuss, please contact Emergency One:
Tel : 01290 424200
Email : info@emergencyone.co.uk